

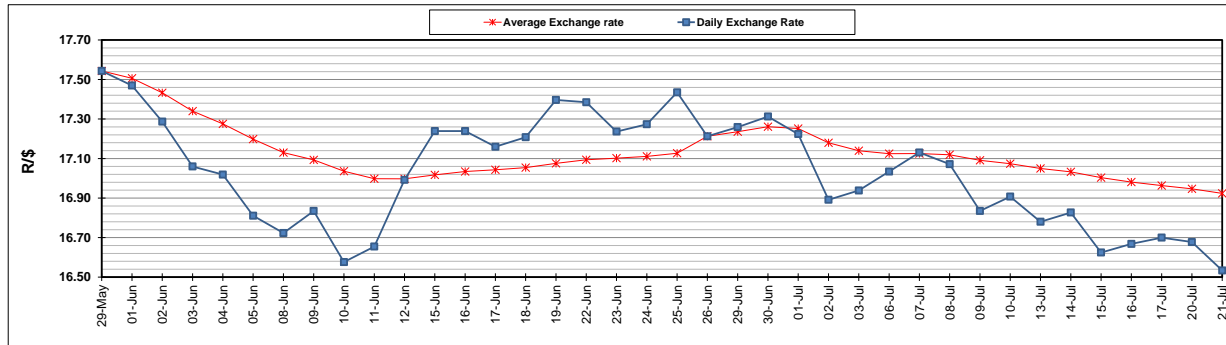
	PETROL 95 ULP	PETROL 93 ULP & LRP	DIESEL 0.05%	DIESEL 0.005%	ILL. PAR.
GAUTENG PUMP PRICE (SA c/l) AS FROM 01/07/2020	1,512.000	1,483.000	-	-	-
WHOLESALE PRICE (SA c/l) AS FROM 01/07/2020	-	-	1,303.560	1,307.960	703.828
SINGLE NATIONAL MAXIMUM RETAIL PRICE	-	-	-	-	882.000
BASIC FUEL PRICE - 21/07/2020 (SA c/l)	547.030	536.379	585.268	589.784	524.431
PRESS RELEASE CONTRIBUTION TO BFP 01/07/2020 - 21/07/2020 (SA c/l)	564.770	545.770	552.630	557.030	499.128
UNIT OVER/(UNDER) RECOVERY - 21/07/2020 (SA c/l)	17.740	9.391	(32.638)	(32.754)	(25.303)
AVERAGE BASIC FUEL PRICE 26/06/2020 - 21/07/2020	554.300	540.089	579.456	583.906	513.530
AVERAGE UNIT OVER/(UNDER) RECOVERY 26/06/2020 - 21/07/2020	(18.197)	(21.486)	(55.660)	(55.043)	(50.069)

### ANALYSIS MOVEMENT OF AVERAGE OVER/(UNDER) RECOVERY

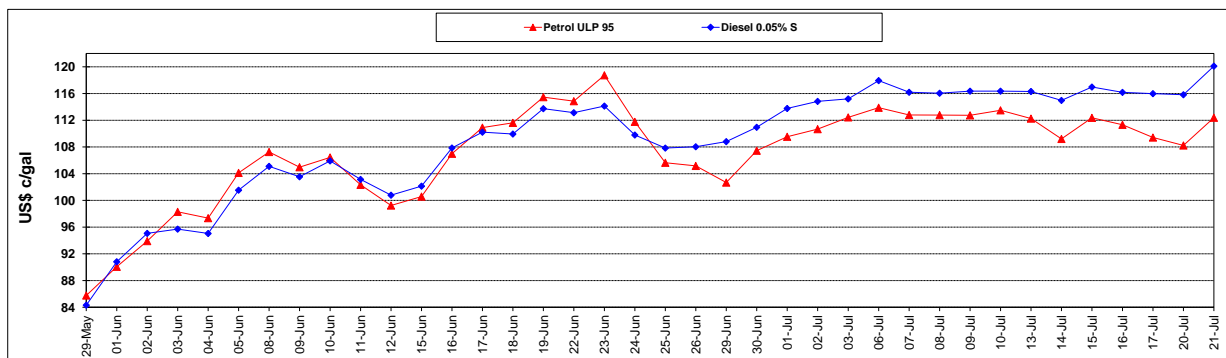
	PETROL 95	PETROL 93	DIESEL 0.05%	DIESEL 0.005%	ILL. PAR.
- MOVEMENT IN INTERNATIONAL PRODUCT PRICES	(24.859)	(27.977)	(62.623)	(62.061)	(56.241)
- MOVEMENT IN EXCHANGE RATE	6.662	6.491	6.964	7.018	6.172
AVERAGE UNIT OVER/(UNDER) RECOVERY 26/06/2020 - 21/07/2020	(18.197)	(21.486)	(55.660)	(55.043)	(50.069)

### R/\$ EXCHANGE RATE - (R/\$16.5338 - 21/07/2020)

#### EXCHANGE RATE USED IN BASIC FUEL PRICE



#### INTERNATIONAL PRODUCT PRICES OF BASKET USED IN BASIC FUEL PRICE



#### BASIC FUEL PRICE IN SA CENTS PER LITRE

